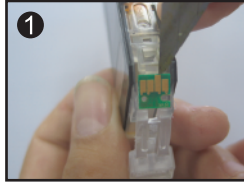


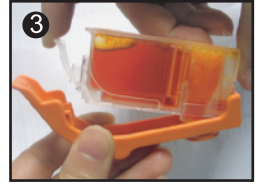
Ink Cartridge



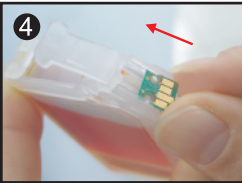
1 Cut off the fixed point of chip and remove the used chip from the OEM ink cartridge.



2 Tear off the yellow label from the ink cartridge.



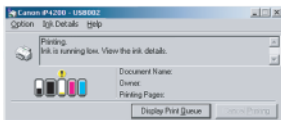
3 Tear off the yellow protection cap from the ink cartridge.



4 Put the OEM chip to the end of slot on the ink cartridge.



5 Install the ink cartridge into the printer.



picture 1

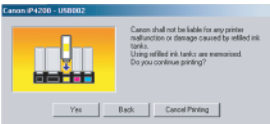


picture 2



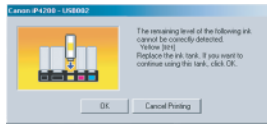
picture 3

A dialog box will pop up, If the dialog box like the shown of picture 1: Please continue printing till another dialog box appears(as shown in picture 2). If a dialog box appears as shown in picture 2 directly, Please press the "OK" button to continue. Which may be as the followed two alternative dialog boxes. One is the reappearing of dialog box in picture 2, Please continue printing till the other dialog shown (See picture 3). The other is a dialog box shown in picture 3 directly, Please operate according to the following instructions: Click "YES" after seeing the dialog box (See picture3)



picture 4

Click "YES" after seeing the dialog box (See picture 4)



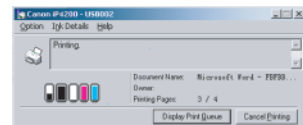
picture 5

Click "OK" after seeing the dialog box (See picture 5)



picture 6

Don't click "Back" or "cancel printing" (See picture 6)



picture 7

Press and hold down the paper feed button for five seconds for some printer models. If no paper feed button exists, Press the Stop/Reset button and then release the button, A dialog box will be appeared (See picture 7). In case a dialog box like picture 6 prompts, Please Re-operate by pressing the paper feed button (or Stop/Reset button) till the dialog box (picture 7) appears again.